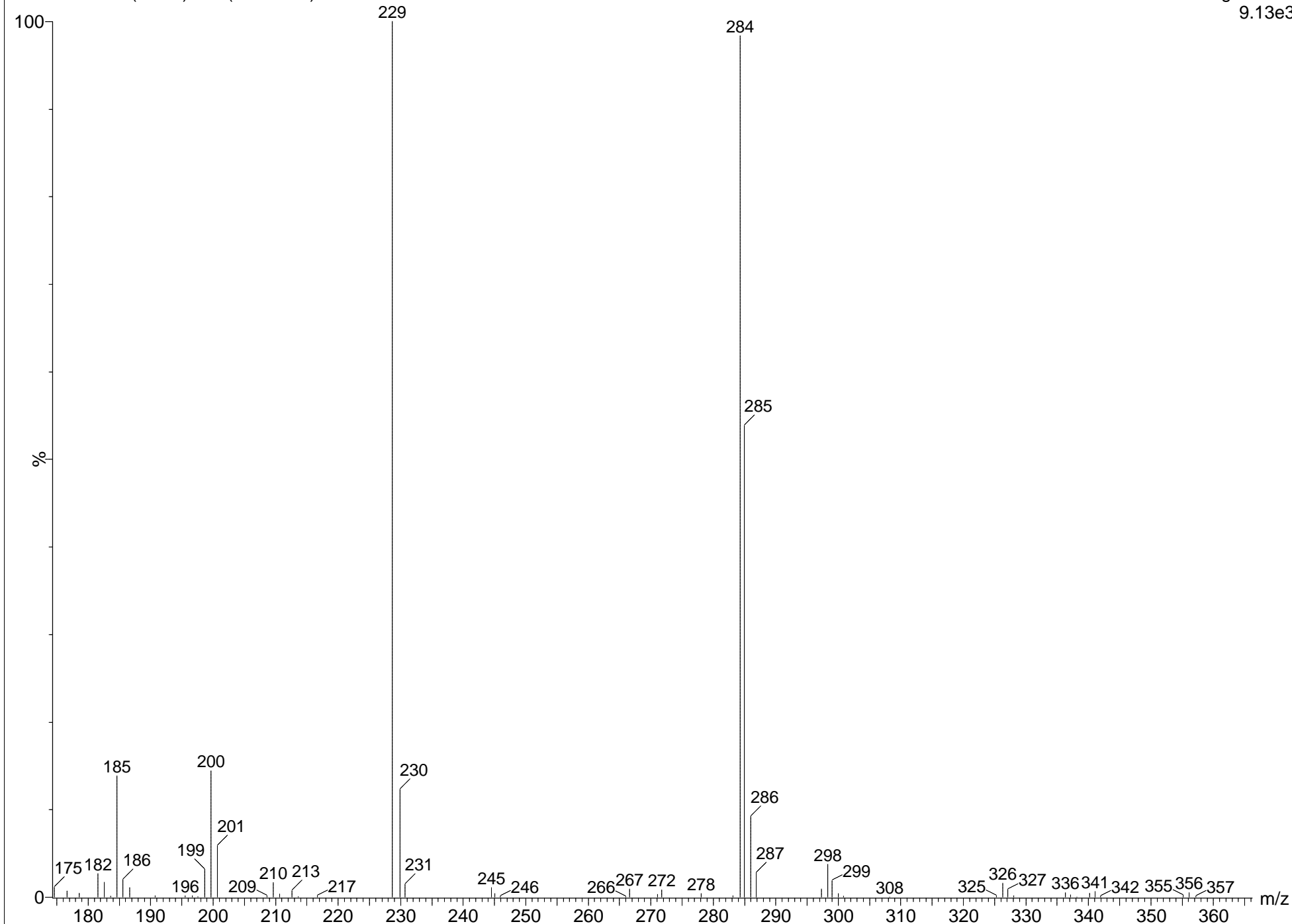


S.ST-JOHN CAMPBELL SS5 701J

MS51572A 36 (0.962) Cm (36:39-2:4)

Magnet EI+
9.13e3





This document was created with the Win2PDF "print to PDF" printer available at
<http://www.win2pdf.com>

This version of Win2PDF 10 is for evaluation and non-commercial use only.

This page will not be added after purchasing Win2PDF.

<http://www.win2pdf.com/purchase/>

Single Mass Analysis

Tolerance = 10.0 PPM / DBE: min = -1.5, max = 50.0

Selected filters: None

Monoisotopic Mass, Odd and Even Electron Ions

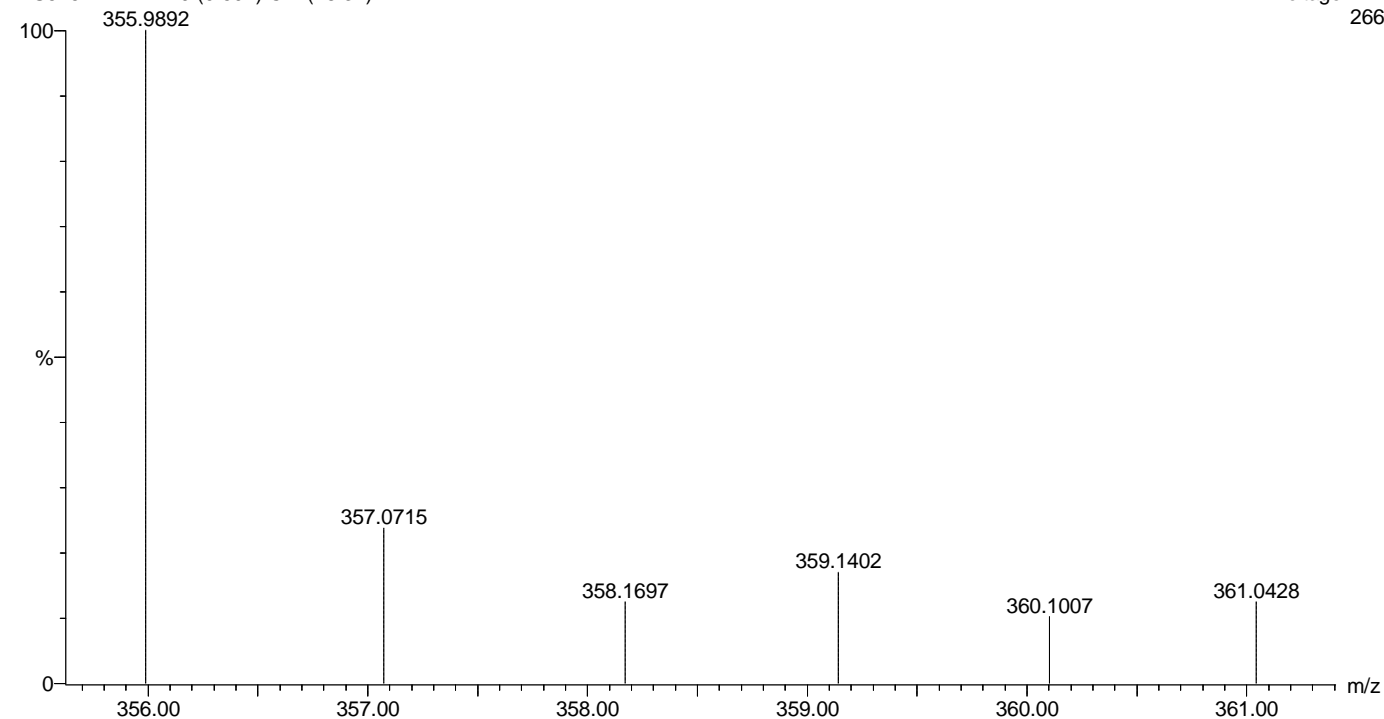
190 formula(e) evaluated with 1 results within limits (up to 50 best isotopic matches for each mass)

Elements Used:

C: 12-12 H: 0-1000 N: 0-10 O: 0-10 F: 3-3 I: 0-1

S.ST-JOHN CAMPBELL SS5 701J AMA

MS51572AMAA 19 (0.697) Cm (18:34)

Voltage EI+
266

Minimum: -1.5
Maximum: 5.0 10.0 50.0

Mass	Calc. Mass	mDa	PPM	DBE	i-FIT	Formula
355.9892	355.9885	0.7	2.0	5.0	5546129.5	C12 H12 O F3 I



This document was created with the Win2PDF "print to PDF" printer available at
<http://www.win2pdf.com>

This version of Win2PDF 10 is for evaluation and non-commercial use only.

This page will not be added after purchasing Win2PDF.

<http://www.win2pdf.com/purchase/>